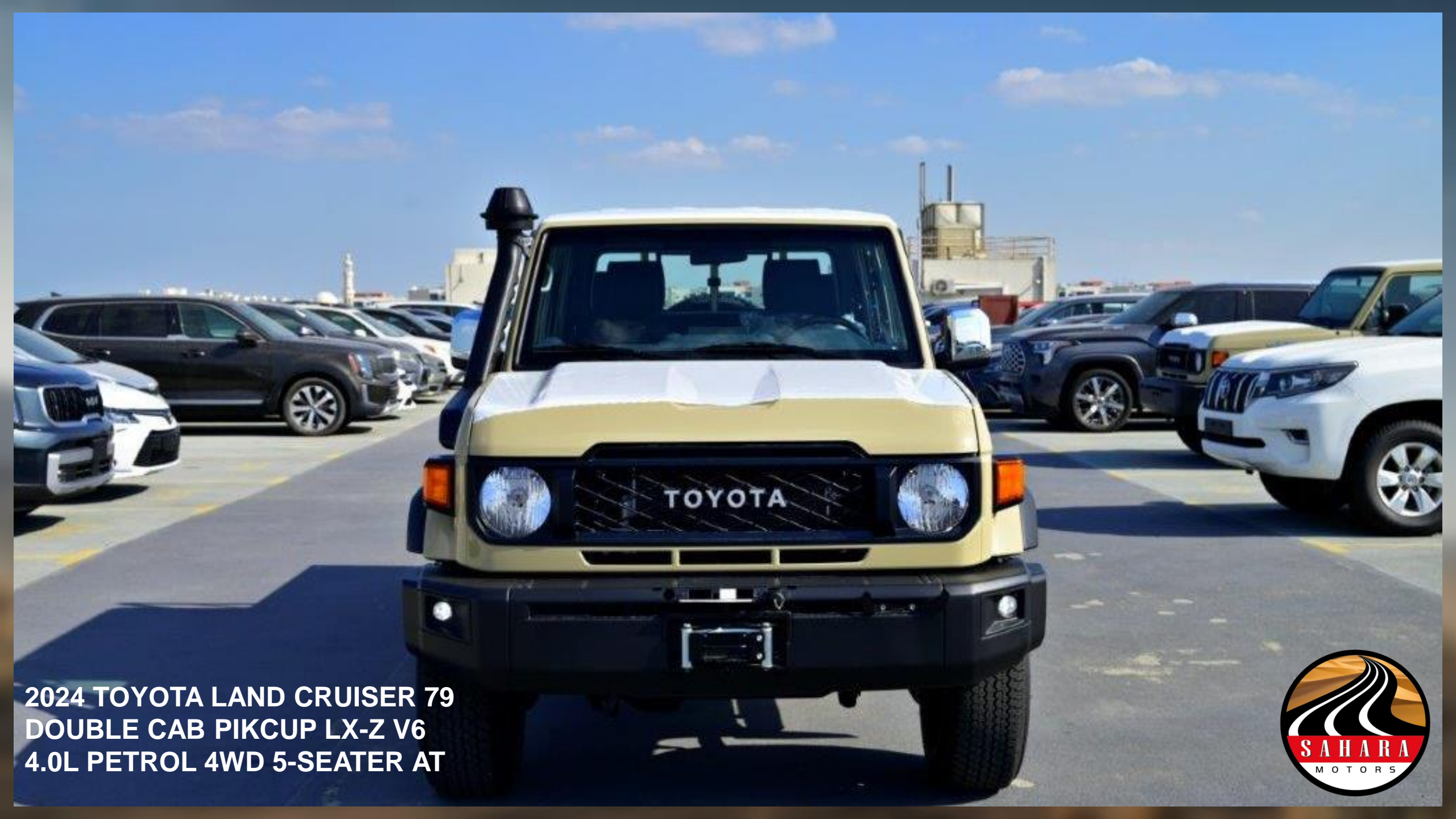




TOYOTA

Land Cruiser 79





**2024 TOYOTA LAND CRUISER 79
DOUBLE CAB PICKUP LX-Z V6
4.0L PETROL 4WD 5-SEATER AT**





**2024 TOYOTA LAND CRUISER 79
DOUBLE CAB PICKUP LX-Z V6
4.0L PETROL 4WD 5-SEATER AT**





**2024 TOYOTA LAND CRUISER 79
DOUBLE CAB PICKUP LX-Z V6
4.0L PETROL 4WD 5-SEATER AT**





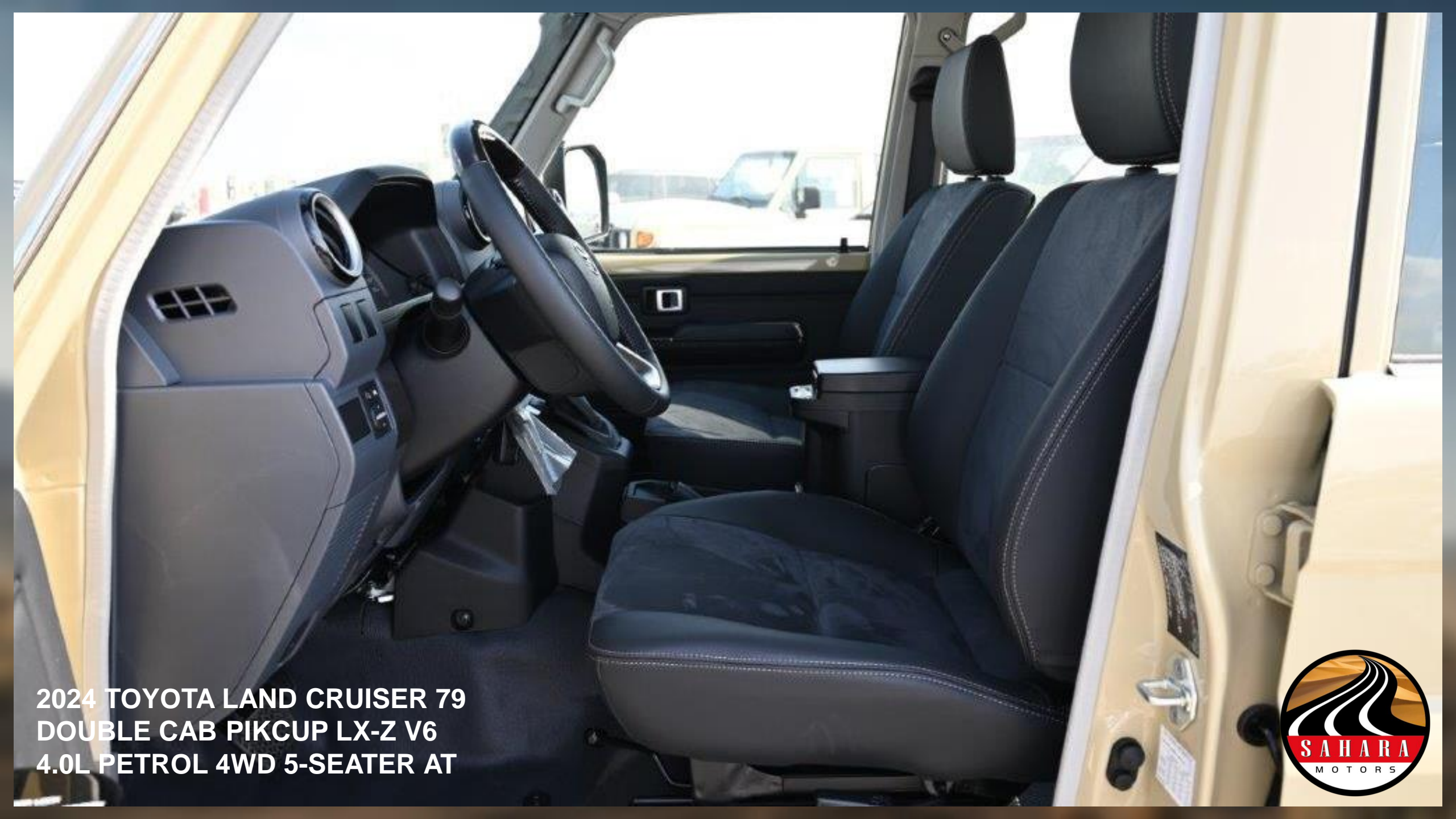
**2024 TOYOTA LAND CRUISER 79
DOUBLE CAB PICKUP LX-Z V6
4.0L PETROL 4WD 5-SEATER AT**





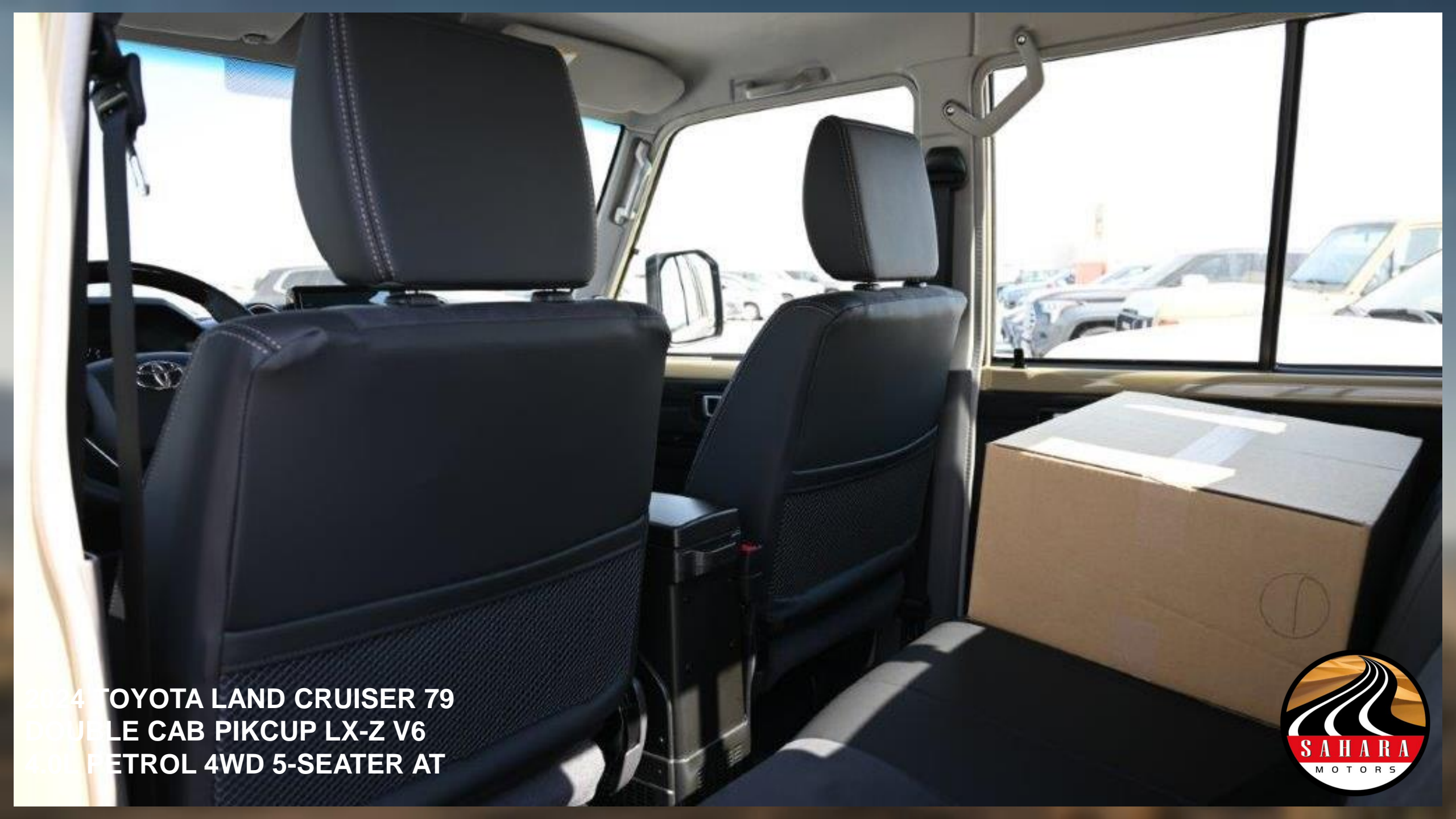
**2024 TOYOTA LAND CRUISER 79
DOUBLE CAB PICKUP LX-Z V6
4.0L PETROL 4WD 5-SEATER AT**





**2024 TOYOTA LAND CRUISER 79
DOUBLE CAB PICKUP LX-Z V6
4.0L PETROL 4WD 5-SEATER AT**





**2024 TOYOTA LAND CRUISER 79
DOUBLE CAB PICKUP LX-Z V6
4000 PETROL 4WD 5-SEATER AT**





**2024 TOYOTA LAND CRUISER 79
DOUBLE CAB PICKUP LX-Z V6
4.0L PETROL 4WD 5-SEATER AT**





**2024 TOYOTA LAND CRUISER 79
DOUBLE CAB PICKUP LX-Z V6
4.0L PETROL 4WD 5-SEATER AT**





**2024 TOYOTA LAND CRUISER 79
DOUBLE CAB PICKUP LX-Z V6
4.0L PETROL 4WD 5-SEATER AT**





**2024 TOYOTA LAND CRUISER 79
DOUBLE CAB PICKUP LX-Z V6
4.0L PETROL 4WD 5-SEATER AT**





**2024 TOYOTA LAND CRUISER 79
DOUBLE CAB PIKCUP LX-Z V6
4.0L PETROL 4WD 5-SEATER AT**





2024 TOYOTA LAND CRUISER 79
DOUBLE CAB PICKUP LX-Z V6
4.0L PETROL 4WD 5-SEATER AT



MODEL CODE -GRJ79L-DKTNKV
ENGINE 1GR-FE,4.0 LTR, V6 CYL, PETROL EFI, VVTI ENGINE: EURO 4
OUTPUT-228 HP / 36.7 KG-M (SAE-NET)
TRANSMISSION – 6 SPEED AUTOMATIC
DOWNHILL ASSIST CONTROL
SUSPENSION: COIL/ LEAF HEAVY DUTY TYPE
BRAKES FR / RR: V.DISC / DRUM
ABS + VSC + BA + EBD + HAC + ATRC
AIR BAG: D+P
AIR CONDITIONER / HEATER
DIGITAL CLOCK
FLOOR MATS
FREE WHEEL HUB
FRONT BONNET NEW DESIGN
FRONT SEPARATE SEATS
FRONT WINDSHIELD WIPER : MIST
FUEL TANK: 130L WITH LOCK
GLOVE BOX WITH KEY
GRAY PAINTED WHEEL RIMS
HALOGEN HEADLAMPS
INNER MIRROR: DAY / NIGHT
MANUAL ANTENNA
METER ILLUMINATION CONTROL
MUDGUARDS: FRONT + REAR
POWER DOOR LOCK
POWER STEERING WITH TILT & TELESCOPIC MECHANISM
POWER WINDOWS
REAR FOG LAMP
REAR GLASS : SLIDING
REAR SEAT: TRANSVERSE

SCHNORKEL
SEAT BELT FR: 3PELRX2
SEAT BELT RR: 3 PELRX2 + 2 PNRX1
SEAT MATERIAL: FABRIC
SEATING CAPACITY: 5
SIDE STEP-ALLUMINIUM
SPARE WHEEL CARRIER WITH LOCK
STEERING WHEEL : URETHANE
SUN VISOR: D + P
TACHOMETER
TOWING HOOKS : FR. (1) + RR. (PINTLE)
TYRE PRESSURE MONITORING SYSTEM



LX-Z FEATURES:

CHROME OUTER MIRRORS

9"DA: AM/FM/BT/USB/ AA/CP

AUXILIARY FUEL TANKS - 1PC

CHROME OUTER MIRRORS

CLOCK WITH MULTI DISPLAY

COOL GLOVE BOX

CRUISE CONTROL

GRADE MARK:LX

INTERMITTENT WIPER

KEY FOR GLOVE BOX

MIRROR FOR SUNVISORS

ROOF DRIP MOULDING

SILVER COLOURED GARNISH ON A/C VENTS

STEERING WHEEL: WOOD + LEATHER

SUSPENSION: COIL / LEAF STANDARD TYPE

TOP SHADE FOR WINDSHIELD GLASS

TOP SHADE ON WINDSHIELD GLASS

USB CHARGER: FRONT 2

WOODGRAIN PANNELLING PACKAGE

265/70 R16" ALLOY (TYPE2)+ OVERF ENDER (BLACK)

REFREIGERATOR

DOOR ARMREST

DOOR INSIDE HANDLE

DOOR TRIM LX

FLOOR MAT -SADDLE TAN

FRONT HEADREST

SEAT MATERIAL SYNTHETIC LEATHER



Land Cruiser 79



CONTACT US

Address: Block 3, Showroom no.25, Al Awir, Ras Al khor

Auto Market, Dubai, UAE

Land Line: +971 43332623

Email: info@saharamotorsuae.com

